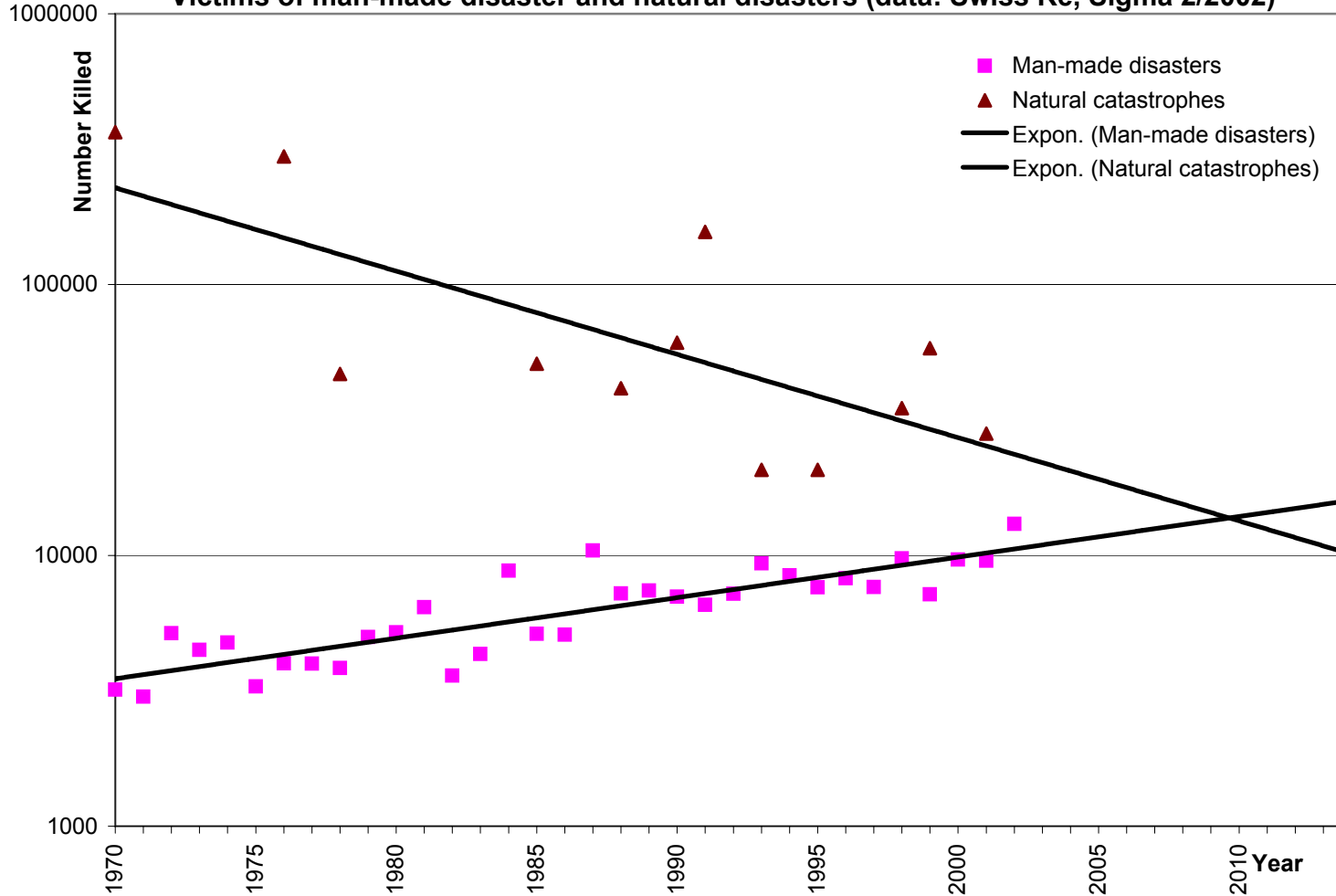


Victims of man-made disaster and natural disasters (data: Swiss Re, Sigma 2/2002)



This semi-logarithmic graph shows that the number of people killed by the worst natural disasters in the last 25 years is dropping exponentially (the sloping curve) and the number of people killed by man-made disasters is rising exponentially (the rising curve). As the lines show, from 2010 the global risk of dying in a man-made disaster will be greater than the risk of dying in a natural disaster. Of course, in the developed countries, this has already been the case for a while. For instance in Denmark, the risk of dying from a man-made disaster is much higher than the risk of dying from a natural disaster.